



PETRELLI®
UOMO
ΣΤΠΙΣΑ

PETRELLI®
U O M O
ΣΤΠΙΣΑ





PETRELLI®
UOMO
ΣΤΠΙΣΔ



PETRELLI®
U O M O
ΣΤΠΙΣΑ



PETRELLI®
U O M O
ΣΤΠΙΣΔ

A full-length photograph of a man standing in a large, arched doorway. He is wearing a maroon suit with a matching vest and tie, a white shirt, and black shoes. The doorway is made of dark wood with intricate carvings and is set within a reddish-brown stone archway. The background is a light-colored wall.

PETRELLI®
U O M O
ΣΤΗΝΙΔ

PETRELLI[®]
U O M O
ΣΤΠΙΣΔ



PETRELLI®
UOMO
ΣΤΠΙΣΔ





PETRELLI®
U O M O
ΣΤΠΙΣΔ

A male model with dark hair, wearing a dark blue three-piece suit (jacket, vest, and trousers) with a white shirt and a dark blue tie. He is standing in a classical architectural setting with stone columns and a wall with floral murals. The lighting is warm and dramatic, highlighting the texture of the suit and the surrounding environment.

PETRELLI®
U O M O
ΣΤΠΙΣΔ



PETRELLI®
U O M O
ΣΤΠΙΣΔ



PETRELLI®
ULTIMO
ΣΤΠΙΣΑ

PETRELLI®
U O M O
ΣΤΠΙΣΔ





PETRELLI®
U O M O
ΣΤΠΙΔ

PETRELLI[®]
U O M O
ΣΤΠΙΣΔ



PETRELLI®
UOMO
ΣΤΠΙΣΔ





PETRELLI®
U O M O
ΣΤΠΙΣΑ



PETRELLI®
U O M O
ΣΤΠΙΣΑ



RETRELLI®
U O M O
ΣΤΠΙΣΑ

A man with dark hair, wearing a dark blue three-piece suit with a patterned vest and tie, stands in front of a large, ornate door. The door features intricate geometric patterns in dark wood and metal, with red and blue accents. The man is looking slightly to his left. The background shows a stone wall with a decorative brick pattern.

PETRELLI®
U O M O
ΣΤΠΙΣΑ



PETRELLI[®]
U O M O
ΣΤΠΙΣΑ

PETRELLI®

U O M O

ΣΤΠΙΣΔ





PETRELLI®
U O M O
ΣΤΠΙΣΑ



PETRELLI®
UOMO
ΣΤΠΙΣΑ

A male model with dark hair and a serious expression stands in front of a decorative doorway. He is wearing a blue three-piece suit with a patterned vest and tie. The background features a stone wall and a doorway with intricate metalwork.

RETRELLI®
UOMO
ΣΤΠΙΣΔ



PETRELLI®
U O M O
ΣΤΠΙΣΑ



PETRELLI®
UOMO
ΣΤΗΛΑ



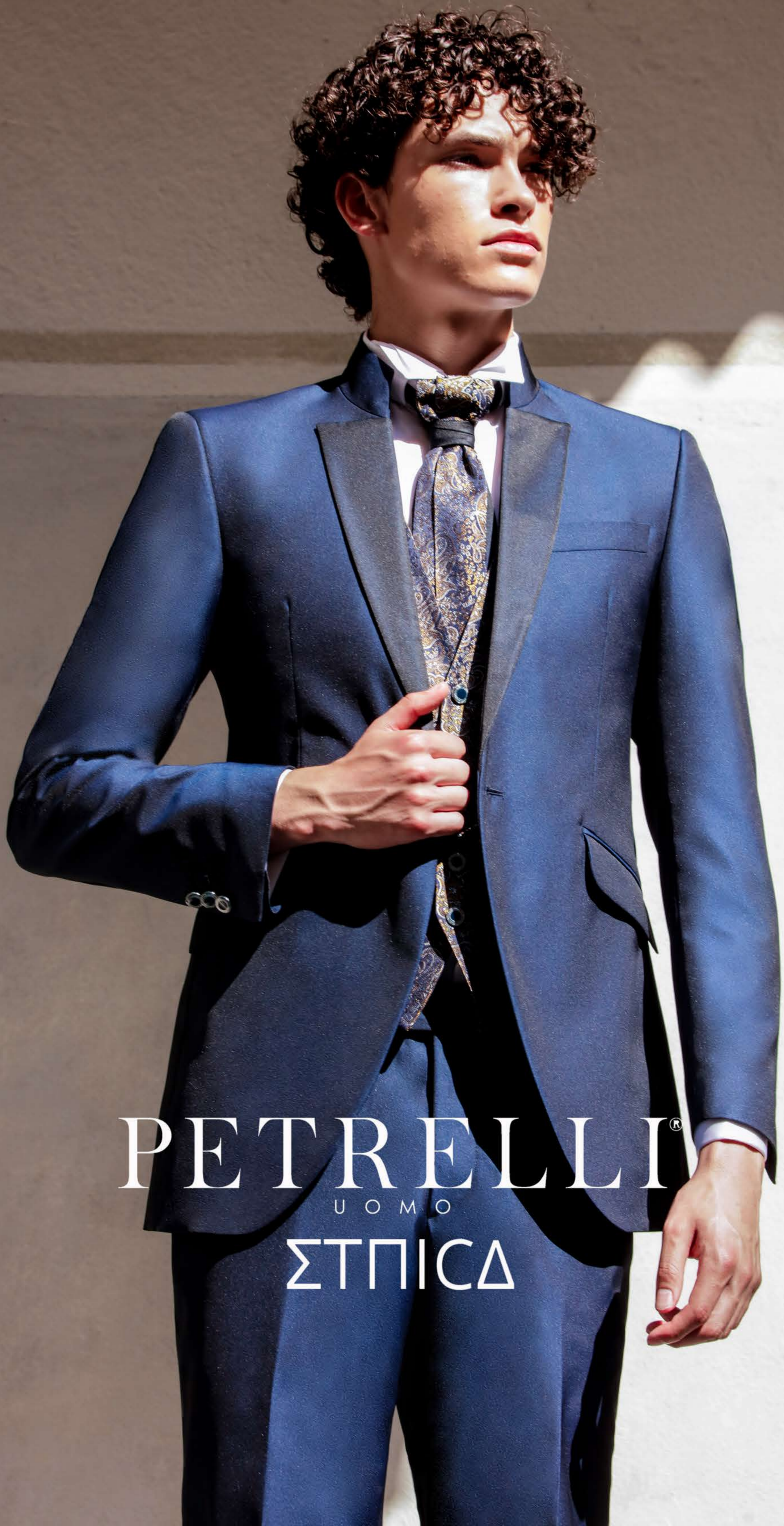
PETRELLI®
U O M O
ΣΤΠΙΣΑ



PETRELLI®

U O M O

ΣΤΠΙΣΑ



PETRELLI®
U O M O
ΣΤΠΙΣΑ



PETRELLI®
U O M O
ΣΤΗΝΙΔΑ



PETRELLI®
U O M O
ΣΤΠΙΣΑ



PETRELLI[®]
UOMO
ΣΤΠΙΣΑ



PETRELLI®
U O M O
ΣΤΠΙΣΑ



PETRELLI®
UOMO
ΣΤΠΙΣΑ



PETRELLI®
UOMO
ΣΤΠΙΣΑ



PETRELLI®
UOMO
ΣΤΠΙΣΔ



PETRELLI®
UOMO
ΣΤΠΙΣΑ



RETRELLI
UOMO
ΣΤΠΙΣΔ



PETRELLI®
U O M O
ΣΤΠΙΣΔ



PETRELLI®
UOMO
ΣΤΠΙΣΑ




PETRELLI®
UOMO
ΣΤΗΝΙΚΑ

A man with dark hair and light eyes is wearing a teal suit jacket over a patterned vest and a teal bow tie. He is also wearing a chain of green beads. The background is a patterned wall with a stone column.

RETRELLI®
U O M O I
ΣΤΠΙΣΑ

A fashion advertisement featuring two male models standing in an ornate, classical architectural setting. The model on the left is wearing a teal suit with a light-colored patterned vest and a matching tie. The model on the right is wearing a navy blue suit with a light-colored patterned vest and a matching tie. Both suits have a double-breasted jacket with decorative buttons. The background consists of dark, intricately carved columns and a lattice-patterned wall. The floor is made of light-colored tiles with a geometric pattern. The lighting is dramatic, highlighting the textures of the clothing and the details of the architecture.

PETRELLI®
UOMO
ΣΤΠΙΣΔ



RETRELLI®
UOMO
ΣΤΠΙΣΔ



PETRELLI®
UOMO
ΣΤΠΙΣΑ

A male model with dark hair and a serious expression stands in a grand, ornate interior. He is wearing a dark, three-piece suit with a white shirt and a patterned tie. His hands are clasped in front of him. The background features intricate geometric and floral patterns on the walls and ceiling, with a tiled floor. The lighting is dramatic, highlighting the textures of the clothing and the architecture.

PETRELLI[®]
U O M O
ΣΤΠΙΣΑ



PETRELLI®
U O M O
ΣΤΠΙΣΑ



PETRELLI®
UOMO
ΣΤΠΙΣΑ



PETRELLI®
U O M O
ΣΤΠΙΣΑ

A man with dark hair, wearing a blue three-piece suit with a white shirt and a blue tie, stands in a historical setting. He is looking slightly to his left. The background features a dark, patterned wall with a grid of small, colorful tiles at the bottom. The lighting is dramatic, highlighting the man's suit.

RETRELLI®
UOMO
ΣΤΠΙΣΑ



PETRELLI®
UOMO O
ΣΤΗΛΑ

RETRELLI®
UOMO
ΣΤΠΙΣΑ





PETRELLI®
UOMO
ΣΤΠΙΣΑ

PETRELLI®
U O M O
ΣΤΠΙΣΑ



PETRELLI®

U O M O

ΣΤΠΙΣΑ

PETRELLI®
UOMO
ΣΤΠΙΣΑ





PETRELLI®
U O M O
ΣΤΠΙΣΑ



PETRELLI®
U O M O
ΣΤΠΙΣΔ



PETRELLI®
UOMO
ΣΤΠΙΣΑ



PETRELLI[®]
U O M O
ΣΤΠΙΣΑ



PETRELLI®
UOMO
ΣΤΠΙΣΑ



PETRELLI®
U O M O
ΣΤΠΙΔ



RETRELLI®
U O M O
ΣΤΠΙΣΔ



RETRELLI®
U O M O
ΣΤΠΙΣΔ

A full-length portrait of a man with dark hair and light skin, wearing a black three-piece suit with a white shirt and a black tie. He is looking off to his left. The background is dark and textured, possibly a stone wall.

PETRELLI®
U O M O
ΣΤΠΙΣΑ



PETRELLI®
U O M O
ΣΤΠΙΣΔ

RETRELLI®
UOMO
ΣΤΠΙΣΔ



PETRELLI®
UOMO
ΣΤΠΙΣΑ





RETRELLI®
UOMO
ΣΤΠΙΣΑ



PETRELLI®
UOMO
ΣΤΠΙΣΑ



PETRELLI®
U O M O
ΣΤΠΙΣΑ



PETRELLI®
U O M O
ΣΤΠΙΣΑ



PETRELLI®
U O M O
ΣΤΠΙCΑ



RETRELLI®
UOMO
ΣΤΠΙΣΑ

A man with dark hair and light eyes, wearing a dark green suit, white shirt, and patterned tie, stands in a room with black and white striped arches. He is looking directly at the camera with a serious expression. The background features a series of arches and columns, creating a dramatic and architectural setting. The lighting is focused on the man, highlighting his features and the texture of his clothing.

PETRELLI®
U O M O
ΣΤΠΙCΑ



PETRELLI®
U O M O
ΣΤΠΙΣΑ

A man with dark, curly hair stands in the center of a room with a striking black and white striped architectural design. He is wearing a vibrant teal suit with a matching vest and tie, over a white shirt and a patterned tie. The room features a series of arches and columns that create a strong sense of depth and perspective. The ceiling is decorated with intricate white patterns. The overall atmosphere is sophisticated and dramatic.

PETRELLI®
U O M O
ΣΤΠΙΣΑ



PETRELLI®
U O M O
ΣΤΠΙΣΑ



PETRELLI®
UOMO
ΣΤΠΙΣΑ



PETRELLI®

U O M O

ΣΤΠΙΣΑ



PETRELLI®
U O M O
ΣΤΠΙΣΑ

A male model with dark hair and light eyes stands in a dramatic, black and white striped architectural setting. He is wearing a teal and dark blue suit with a patterned vest and tie. The background features a series of arches and a decorative metal railing. The floor is made of red hexagonal tiles.

PETRELLI®
UOMO
ΣΤΠΙΣΑ

A full-body photograph of a man standing in a grand, ornate archway. The archway is constructed from alternating black and white stone blocks, creating a striking geometric pattern. The man is wearing a light blue, three-piece suit with a matching tie and a white shirt. He is looking slightly to his right. The floor is made of red tiles with a white geometric pattern. The overall lighting is dramatic, highlighting the textures of the suit and the architectural details.

PETRELLI®
U O M O
ΣΤΠΙΣΑ



PETRELLI®
U O M O
ΣΤΠΙΣΔ



PETRELLI®
U O M O
ΣΤΠΙΣΔ

PETRELLI®
U O M O
ΣΤΠΙΣΑ



A male model with dark hair and light eyes stands centrally in a dramatic, black and white striped archway. He is wearing a dark purple or maroon suit with intricate silver and white floral patterns. The background features a series of repeating arches, creating a strong sense of depth and architectural rhythm. The lighting is focused on the model, highlighting the texture of his suit. The overall mood is sophisticated and elegant.

PETRELLI[®]
U O M O
ΣΤΠΙΣΔ



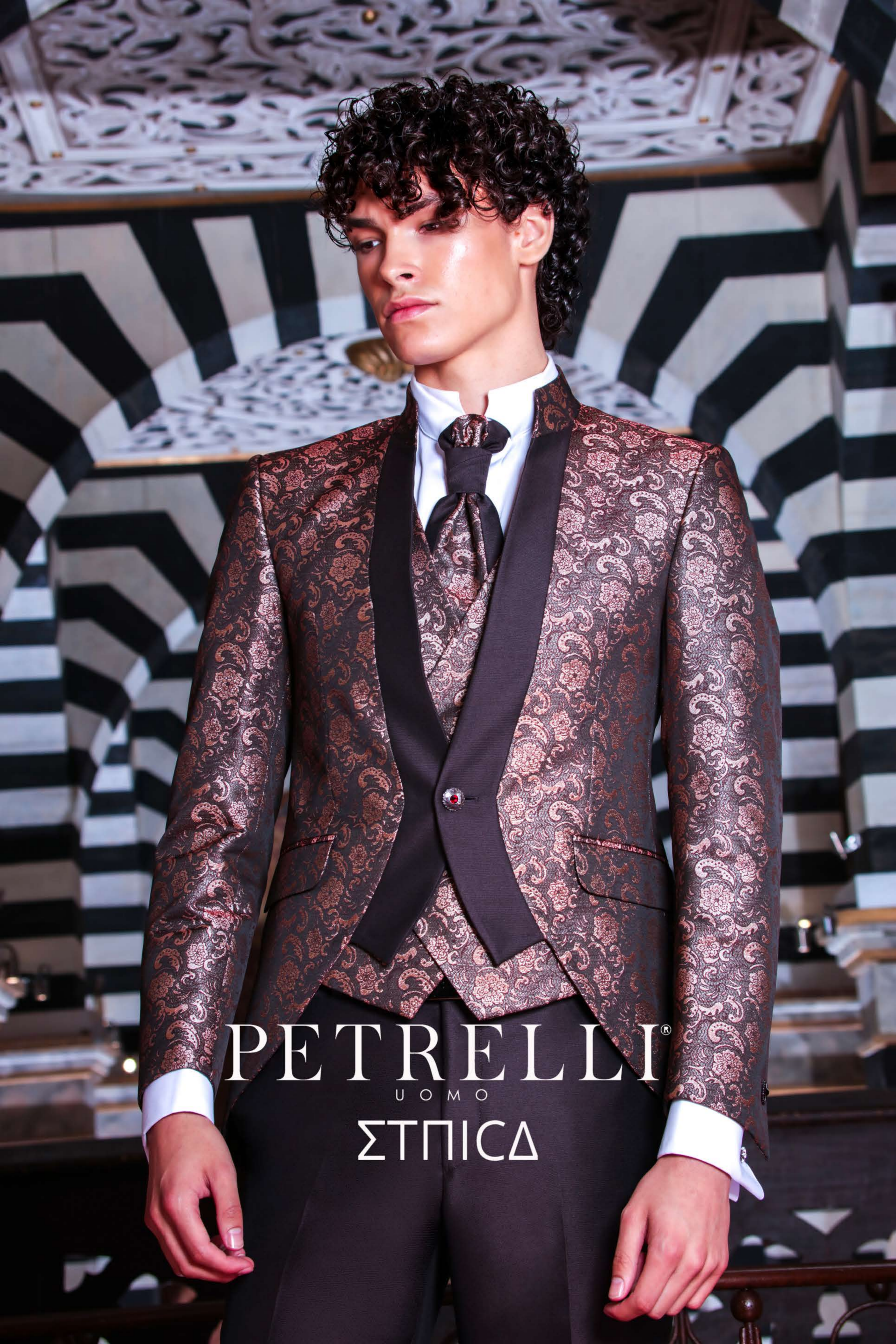
PETRELLI®
UOMO
ΣΤΙΛΑ

A man with dark hair, wearing a teal suit, a patterned teal vest, and a teal tie, stands in a grand, ornate interior. The space is characterized by a series of arches with black and white horizontal stripes. The ceiling features intricate white geometric patterns. The man is holding a teal hat in his right hand and a cane in his left. The overall atmosphere is one of classic elegance and sophisticated style.

PETRELLI®
U O M O
ΣΤΠΙΣΑ

A male model with dark, curly hair is standing in a black and white striped archway. He is wearing a dark brown suit with a gold and brown paisley pattern on the jacket and vest, a white shirt, a dark tie, and dark trousers. He is also wearing black shoes. The background features a red and white hexagonal tile floor and a decorative metal railing.

PETRELLI[®]
UOMO
ΣΤΠΙΣΔ



PETRELLI®
U O M O
ΣΤΠΙΣΑ



PETRELLI®
U O M O
ΣΤΠΙΣΑ

A man with dark hair and a serious expression stands in the center of a room with a striking black and white striped architectural design. He is wearing a vibrant blue three-piece suit, including a jacket, a matching vest, and trousers, paired with a white dress shirt and a blue necktie. The room features a series of arches and columns, each decorated with horizontal stripes. The ceiling is adorned with intricate white geometric patterns. The lighting is dramatic, highlighting the man and the textures of the architecture.

PETRELLI®
UOMO
ΣΤΠΙΣΑ



PETRELLI®
UOMO
ΣΤΠΙΣΑ



PETRELLI®
UOMO
ΣΤΠΙΣΑ



PETRELLI®
ΣΤΠΙΣΑ

A male model with curly hair is the central focus, wearing a white tuxedo with a subtle floral pattern, a white top hat, a white shirt, and a white bow tie. He is holding a white rolled-up document with a gold tassel. The background is a dramatic, black and white striped architectural space with arches and columns. The lighting is dramatic, highlighting the model and his attire.

PETRELLI®
UOMO
ΣΤΠΙΣΑ



PETRELLI®
UOMO
ΣΤΗΝΙΚΑ

PETRELLI®
UOMO
ΣΤΠΙΣΑ



A full-body photograph of a man standing in a grand, ornate interior. He is wearing a vibrant blue, patterned three-piece suit with a matching tie and pocket square. He holds a dark cane in his right hand. The background features a series of arches with black and white striped patterns and intricate white carvings. The floor is made of red hexagonal tiles. The lighting is dramatic, highlighting the textures of the suit and the architectural details.

PETRELLI®
UOMO
ΣΤΠΙΣΑ

A man with dark hair and a serious expression is the central focus. He is wearing a vibrant blue three-piece suit with a subtle, intricate paisley pattern. The suit includes a jacket, a vest, and matching trousers. Underneath, he wears a white dress shirt and a blue tie with a matching pattern. In his right hand, he holds a dark cane with a silver-colored ferrule. The background is a workshop or atelier, characterized by a large, arched opening with a black and white checkered pattern. The lighting is dramatic, highlighting the texture of the suit and the man's features.

PETRELLI®
U O M O
ΣΤΠΙΣΑ

A full-body photograph of a man standing in a grand, ornate interior. He is wearing a dark blue three-piece suit with a patterned vest and tie. The background features a series of arches with black and white striped patterns. The floor is made of red tiles with a white geometric pattern. A decorative metal railing is visible in the foreground.

PETRELLI®
U O M O
ΣΤΠΙΣΔ



PETRELLI®

UOMO

ΣΤΠΙΣΑ

A male model with dark hair and a light complexion is the central focus. He is wearing a vibrant blue three-piece suit, including a jacket, a vest with a subtle paisley pattern, and matching trousers. Underneath, he wears a white dress shirt and a blue patterned necktie. He is looking down and to his left with a slight smile. The background is a dramatic, black and white striped architectural space with arches and a decorative metal railing in the foreground. The lighting is soft, highlighting the textures of the suit and the architectural details.

PETRELLI®
U O M O
ΣΤΠΙΣΑ