



PETRELLI®
UOMO
1941



PETRELLI®

U O M O

1941

A full-length photograph of a man with dark, wavy hair and a beard, wearing a dark blue tuxedo. He is standing in a doorway with a textured, light-colored wall. The lighting is dramatic, with strong shadows cast on the wall behind him. The tuxedo consists of a jacket, a vest, and trousers, paired with a white shirt, a dark tie, and a pocket square. He is also wearing black dress shoes.

PETRELLI®
UOMO
1941



PETRELLI®
U O M O
1941



PETRELLI®
UOMO
1941



PETRELLI®
UOMO
1941



PETRELLI®
UOMO
1941



PETRELLI®
UOMO
1941



PETRELLI®
U O M O
1941



PETRELLI®
U O M O
1941



PETRELLI®
UOMO
1941



PETRELLI®
UOMO
1941



PETRELLI®
UOMO
1941



PETRELLI®
UOMO
1941



PETRELLI[®]
U O M O
1941



PETRELLI[®]
U O M O
1941



PETRELLI®

U O M O

1941



PETRELLI®
U O M O
1941



PETRELLI®
U O M O
1941



PETRELLI[®]
UOMO
1941

PETRELLI®
UOMO
1941





PETRELLI[®]
U O M O
1941



PETRELLI[®]
U O M O
1941

A full-length photograph of a man with a beard and dark hair, looking to his left. He is wearing a dark blue three-piece suit with a white waistcoat and a white bow tie. He is standing in a room with dark wood paneling and a stone pillar. The lighting is dramatic, highlighting the textures of the suit and the wood.

PETRELLI[®]
UOMO
1941



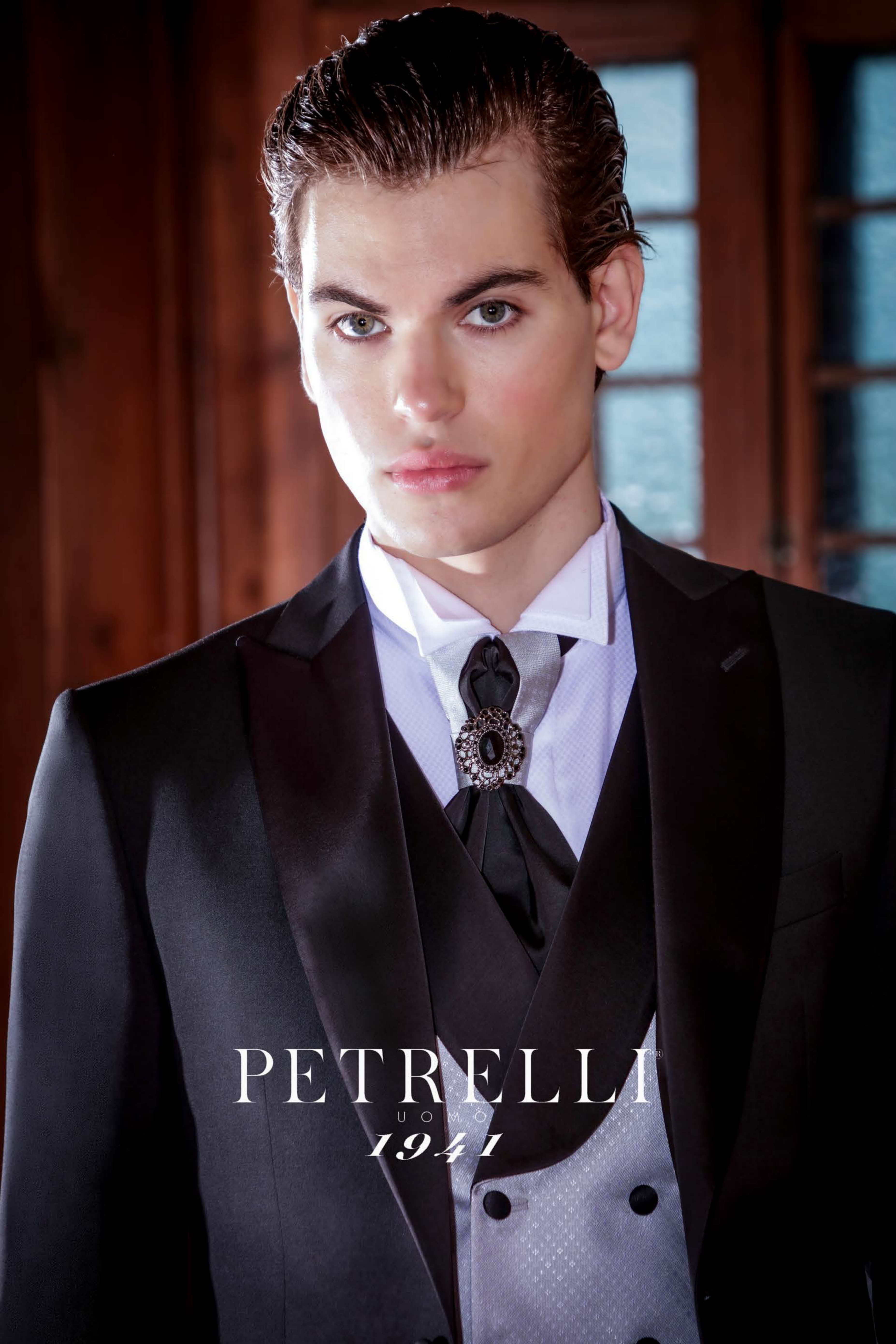
PETRELLI®
U O M O
1941



PETRELLI®
UOMO
1941



PETRELLI[®]
U O M O
1941



PETRELLI[®]
U O M O
1941



PETRELLI®
UOMO
1941



PETRELLI®
UOMO
1941

A man with a beard and dark hair, wearing a blue tuxedo with a white shirt and a blue bow tie, stands in a room with wood-paneled walls and a window. The lighting is warm and dramatic, highlighting the texture of the suit and the wood paneling.

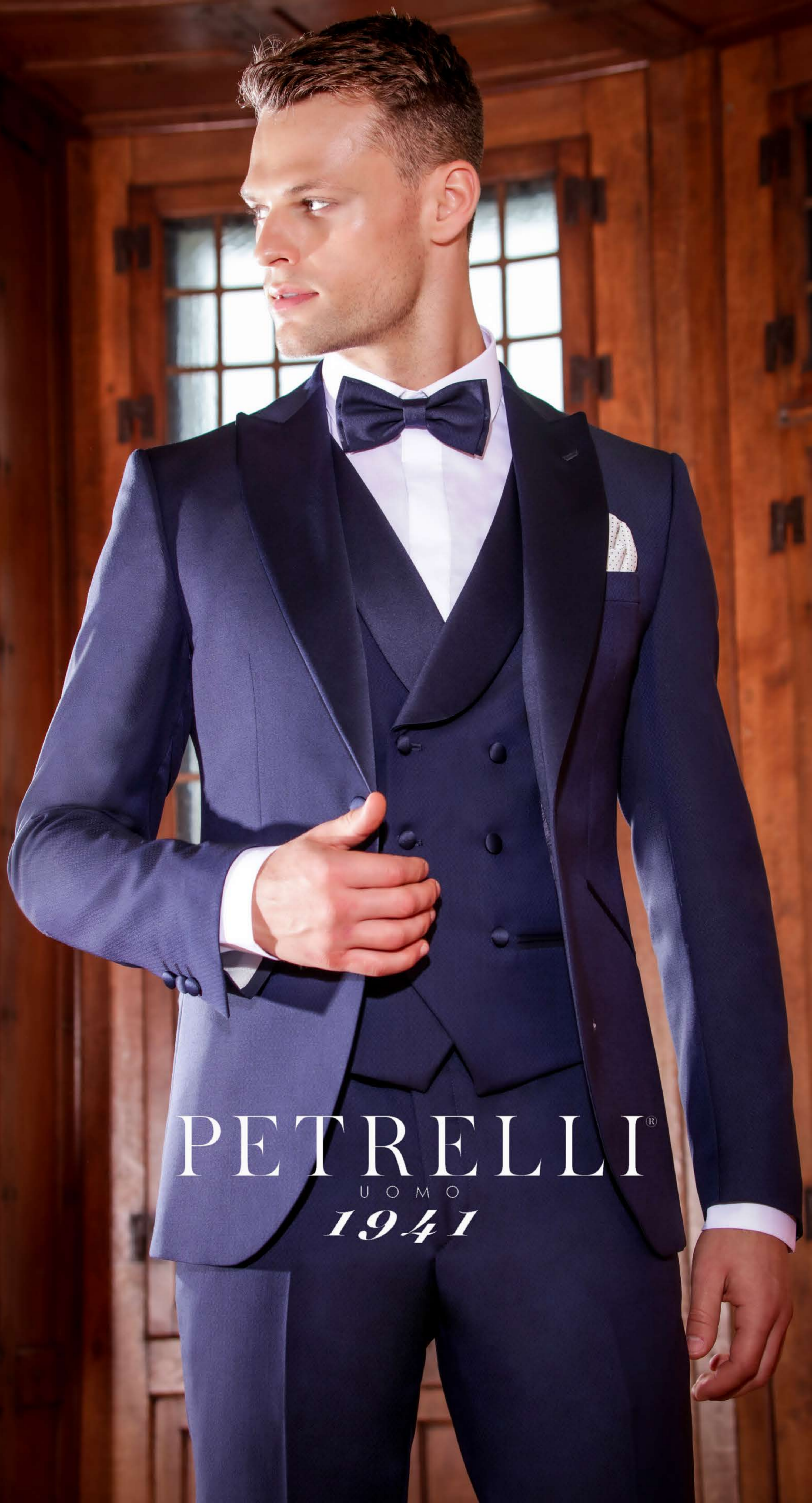
PETRELLI[®]
UOMO
1941

A full-length photograph of a man standing in a room with extensive wood paneling. He is wearing a dark blue, textured tuxedo consisting of a jacket, a vest, and trousers. Underneath, he wears a white dress shirt and a dark blue bow tie. He is also wearing black dress shoes. The room features large wooden doors with multi-paned glass windows in the background. The floor is made of light-colored wood in a herringbone pattern. The lighting is dramatic, highlighting the textures of the suit and the wood.

PETRELLI®
UOMO
1941



PETRELLI®
U O M O
1941



PETRELLI®
U O M O
1941



PETRELLI®
UOMO
1941



PETRELLI®
U O M O
1941



PETRELLI[®]
UOMO
1941

A full-length photograph of a man standing in a wooden doorway. He is wearing a dark blue tuxedo with a white shirt and a dark bow tie. The background consists of dark wood paneling and a door with a multi-paned window. The floor is made of light-colored tiles.

PETRELLI®
U O M O
1941



PETRELLI®
U O M O
1941



RETRELLI®
U O M O
1941



PETRELLI[®]
U O M O
1941



PETRELLI®
U O M O
1941

A full-length photograph of a man with dark, wavy hair and a beard, wearing a dark blue three-piece suit. He is standing in a doorway with a wooden archway. The lighting is dramatic, with strong shadows cast on the wall and floor. The man is wearing a white shirt, a dark tie, and a decorative brooch. He is also wearing dark loafers. The overall mood is sophisticated and classic.

PETRELLI®
UOMO
1941

A full-length photograph of a man with dark, wavy hair and a beard, wearing a dark blue three-piece suit. He is standing in a narrow, arched doorway with a wooden archway. The lighting is dramatic, with strong shadows cast on the walls and floor. The man is looking directly at the camera with a neutral expression. He is wearing a white shirt, a dark tie, and a decorative brooch. The suit is well-tailored, and he is also wearing dark loafers.

PETRELLI®
UOMO
1941

PETRELLI®
U O M O
1941





PETRELLI®
U O M O
1941

A full-length photograph of a man standing in a doorway. He is wearing a blue suit jacket, a matching blue vest with a subtle pattern, a white dress shirt, and a blue patterned tie. He is looking slightly to his left. The background is a warm, textured wall with a doorway behind him.

PETRELLI[®]
UOMO
1941



PETRELLI[®]
UOMO
1941



PETRELLI®
UOMO
1941



PETRELLI®
U O M O
1941



PETRELLI®
U O M O
1941



PETRELLI[®]
U O M O
1941



PETRELLI®
UOMO
1941

A man with dark hair and a beard is shown from the waist up, wearing a dark blue military-style suit. The suit features a double-breasted jacket with silver buttons, a matching vest with silver buttons, a white dress shirt, and a dark blue necktie. He is standing in a hallway with stone walls and arches, looking off to the side. The lighting is warm and dramatic.

PETRELLI®
U O M O
1941

A full-length photograph of a man standing in a grand, wood-paneled room. He is wearing a dark blue suit jacket, a light-colored patterned vest with a chain, a white shirt, and a patterned tie. He is looking off to the side. The room features large, multi-paned windows with stained glass accents. The floor is made of light-colored tiles.

PETRELLI®
U O M O
1941



PETRELLI®

U O M O

1941

PETRELLI[®]
U O M O
1941





PETRELLI®

U O M O

1941

A full-length photograph of a man with dark, wavy hair and a beard, wearing a dark navy blue tuxedo jacket and matching trousers. Underneath, he wears a light-colored, possibly silver or white, patterned vest over a light purple or lavender shirt with a white bow tie. A decorative brooch is pinned to the center of the vest. He is standing in a room with dark wood paneling and a large window with a grid of small panes, some of which are stained glass with blue and yellow patterns. Sunlight filters through the window, creating a pattern of light and shadow on the floor. The overall mood is classic and sophisticated.

PETRELLI®
UOMO
1941

A full-length photograph of a man standing in a room with dark wood paneling and a large stained glass window. The man is wearing a dark blue suit, a white shirt, a dark tie with a decorative brooch, and black shoes. The lighting is dramatic, with strong shadows cast on the floor.

PETRELLI[®]
U O M O
1941

A full-length photograph of a man with a beard and dark hair, looking slightly to his left. He is wearing a dark blue suit jacket, a light grey waistcoat with a chain, a white shirt, and a dark tie. He is standing in a room with dark wood paneling and a large window with a grid of small panes, some of which are stained glass with blue and yellow patterns. Sunlight is streaming through the window, creating a pattern of light and shadow on the floor.

PETRELLI®
UOMO
1941

PETRELLI[®]
U O M O
1941



PETRELLI[®]
U O M O
1941





PETRELLI®
UOMO
1941



PETRELLI®

UOMO

1941



PETRELLI[®]
U O M O
1941



PETRELLI®
UOMO
1941



PETRELLI®
U O M O
1941



PETRELLI®
U O M O
1941

A male model with dark hair and light eyes stands in a grand, wood-paneled room. He is wearing a dark navy blue tuxedo with a white shirt, a white waistcoat, and a white tie. A decorative brooch is pinned to the tie. He is also wearing black dress shoes. The room features large, multi-paned windows with decorative glass, and the floor is made of polished wood. The lighting is dramatic, with strong shadows cast across the floor.

PETRELLI®
UOMO
1941



PETRELLI®
U O M O
1941



PETRELLI®
UOMO
1941



PETRELLI[®]
U O M O
1941



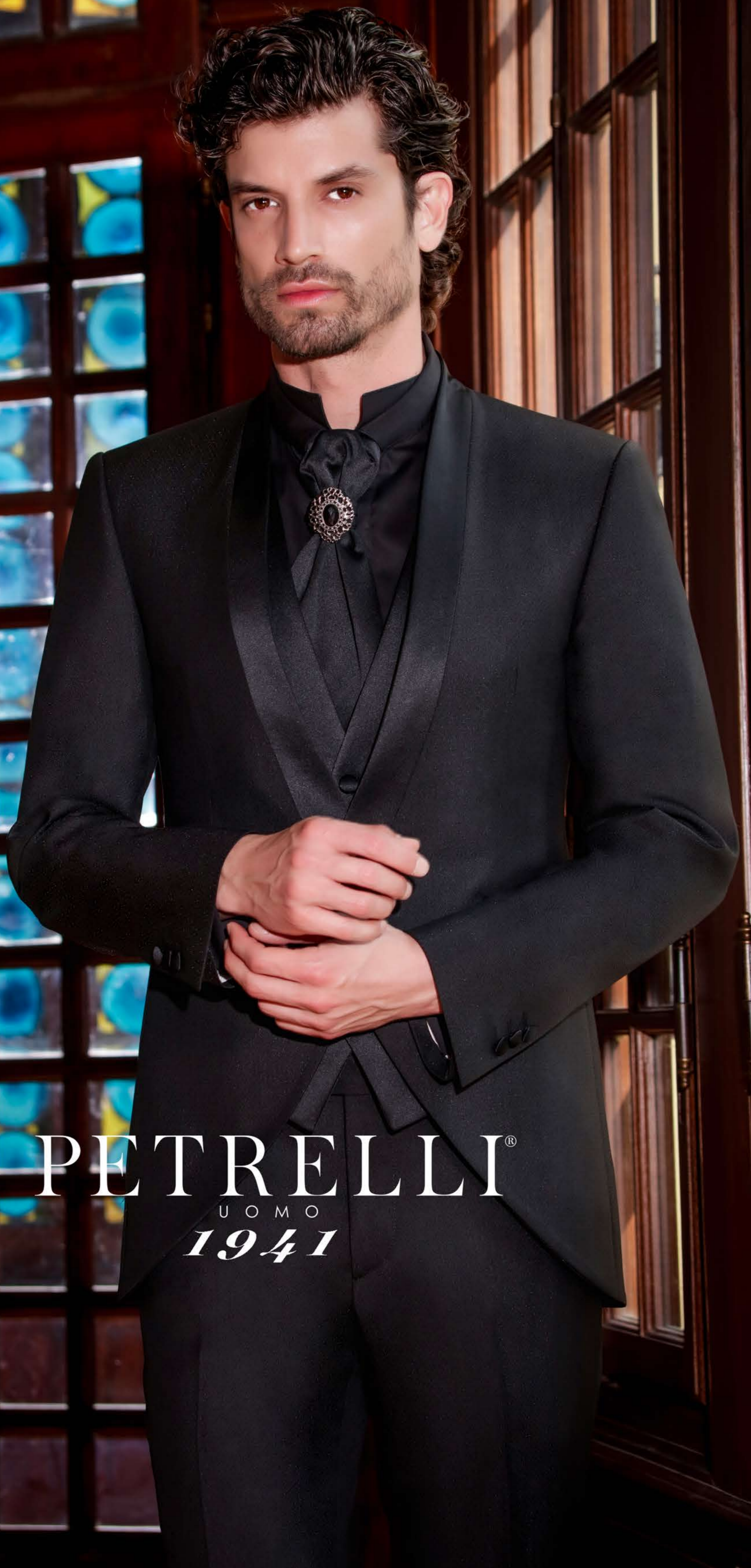
PETRELLI®
UOMO
1941

A man with dark hair and a beard, wearing a dark blue three-piece suit with a high-collared shirt and a tie, stands in profile. He is positioned in front of a large, ornate window with a grid of small panes. Some panes contain blue and yellow stained glass designs. The lighting is dramatic, highlighting the texture of the suit and the man's features.

PETRELLI®
U O M O
1941

A full-length photograph of a man with dark, wavy hair and a beard, wearing a black tuxedo with a high-collared shirt and a decorative brooch. He is standing in a hallway with large, multi-paned windows. The lighting is dramatic, with strong shadows cast on the floor. The text 'PETRELLI UOMO 1941' is overlaid at the bottom of the image.

PETRELLI®
U O M O
1941



PETRELLI®
UOMO
1941



PETRELLI[®]
UOMO
1941

PETRELLI[®]
UOMO
1941





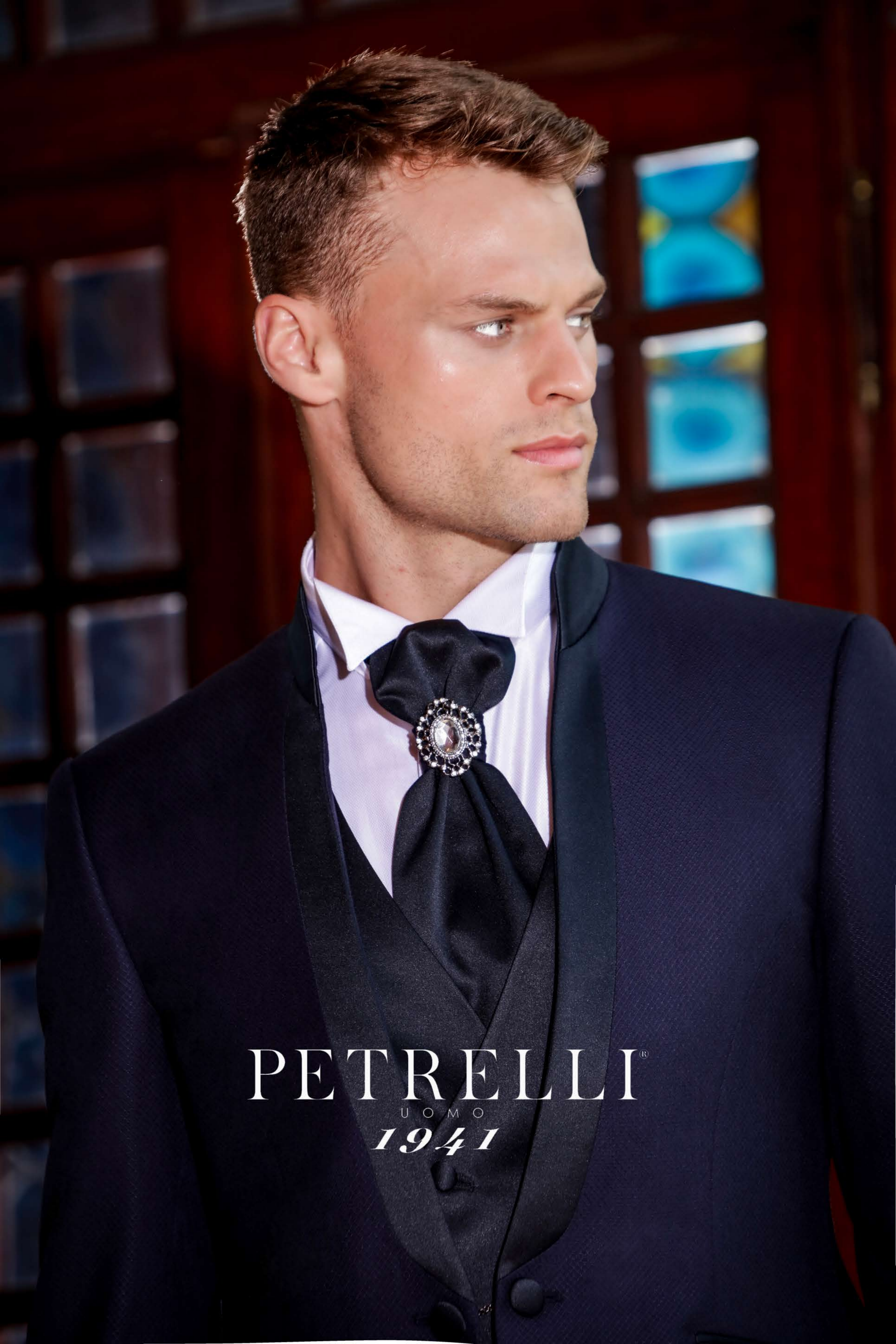
PETRELLI®
UOMO
1941



PETRELLI®
U O M O
1941



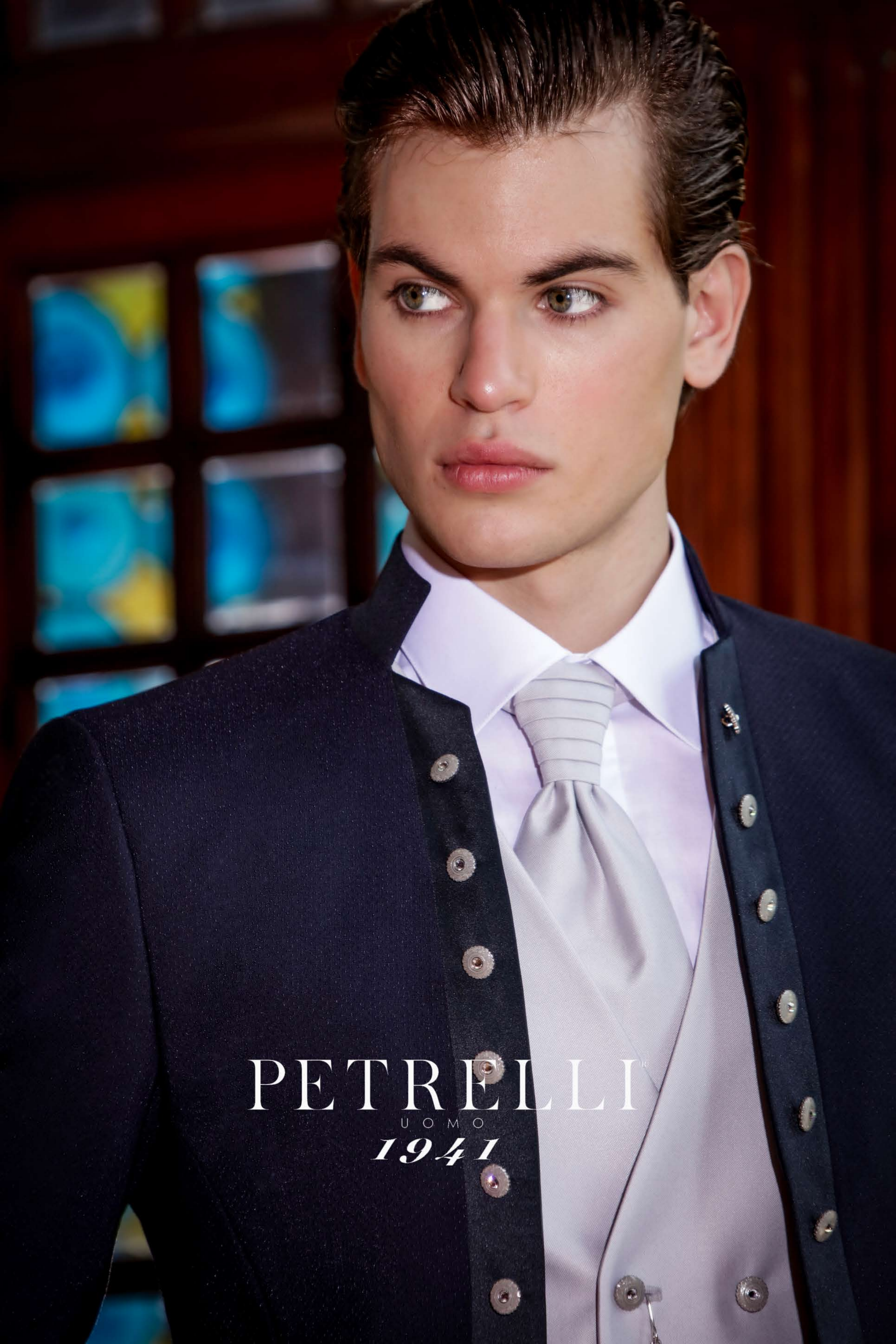
PETRELLI®
U O M O
1941



PETRELLI®
UOMO
1941



PETRELLI[®]
U O M O
1941



PETRELLITM
UOMO
1941



PETRELLI®
U O M O
1941



PETRELLI®
UOMO
1941



PETRELLI[®]
U O M O
1941



PETRELLI®

U O M O

1941



PETRELLI®
U O M O
ΣΤΠΙΣΔ



PETRELLI®

U.O.M.

1941

A full-length photograph of a man with a beard and dark hair, wearing a sharp, dark blue three-piece suit. He is standing in a room with rich, dark wood paneling and furniture. He has his hands clasped in front of him and is looking slightly to the side. The lighting is dramatic, highlighting the texture of the suit and the wood. The overall mood is classic and sophisticated.

PETRELLI®
U O M O
1941



PETRELLI[®]
U O M O
1941



PETRELLI[®]
U O M O
1941



PETRELLI[®]
U O M O
1941

PETRELLI[®]
U O M O
1941





PETRELLI[®]
U O M O
1941





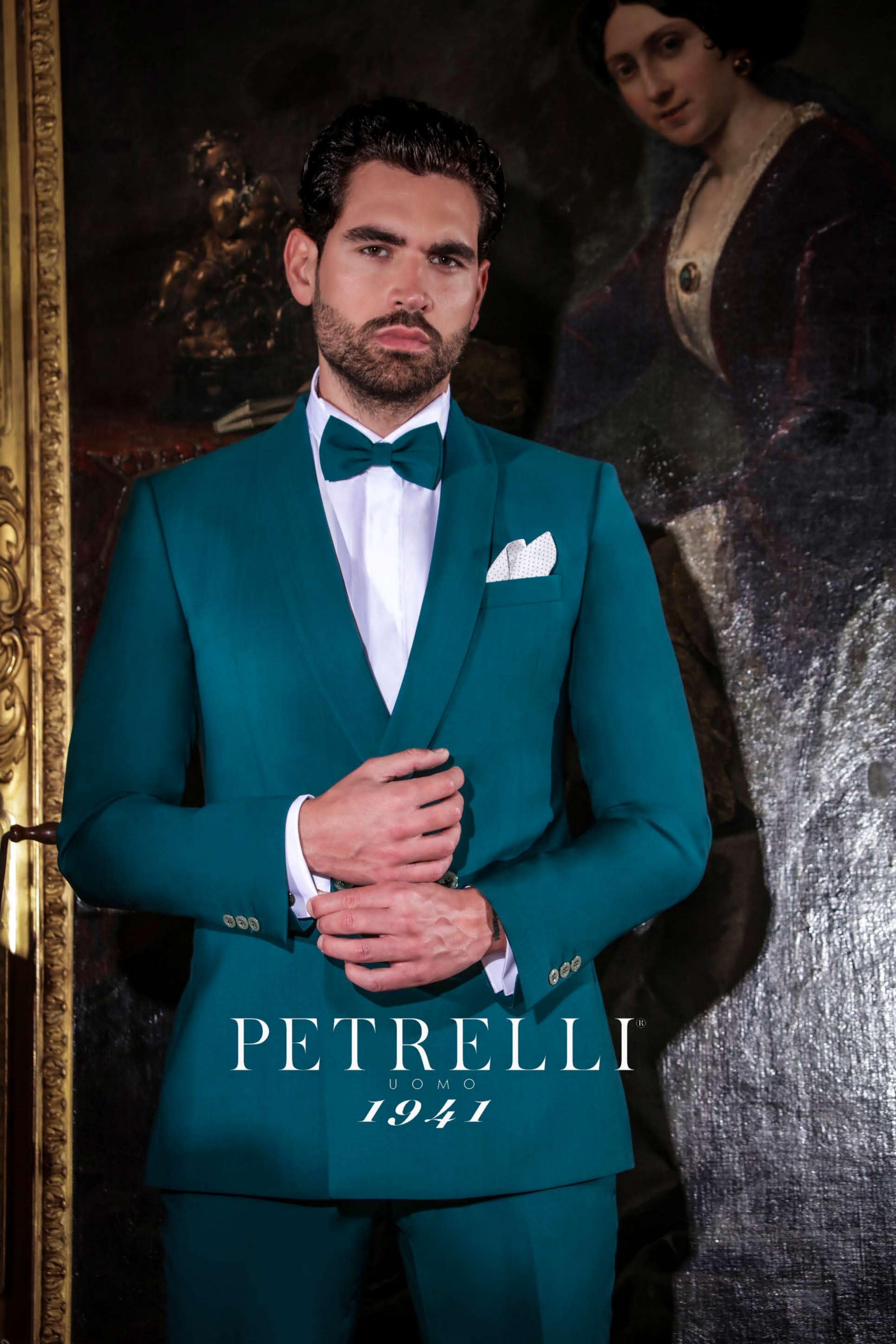
PETRELLI®

U O M O

1941



PETRELLI[®]
UOMO
1941



PETRELLI®
U O M O
1941



PETRELLI
UOMO
1941



PETRELLI[®]
U O M O
1941



PETRELLI[®]

U O M O

1941



PETRELLI[®]
U O M O
1941

A man with dark hair and a beard, wearing a light pink three-piece suit, stands in a room. He is looking to his left with his hands clasped. To his left is a wooden harpsichord. Behind him is a large, ornate painting of a woman in a dark dress. The room has wood-paneled walls and a wooden floor.

PETRELLI[®]
UOMO
1941



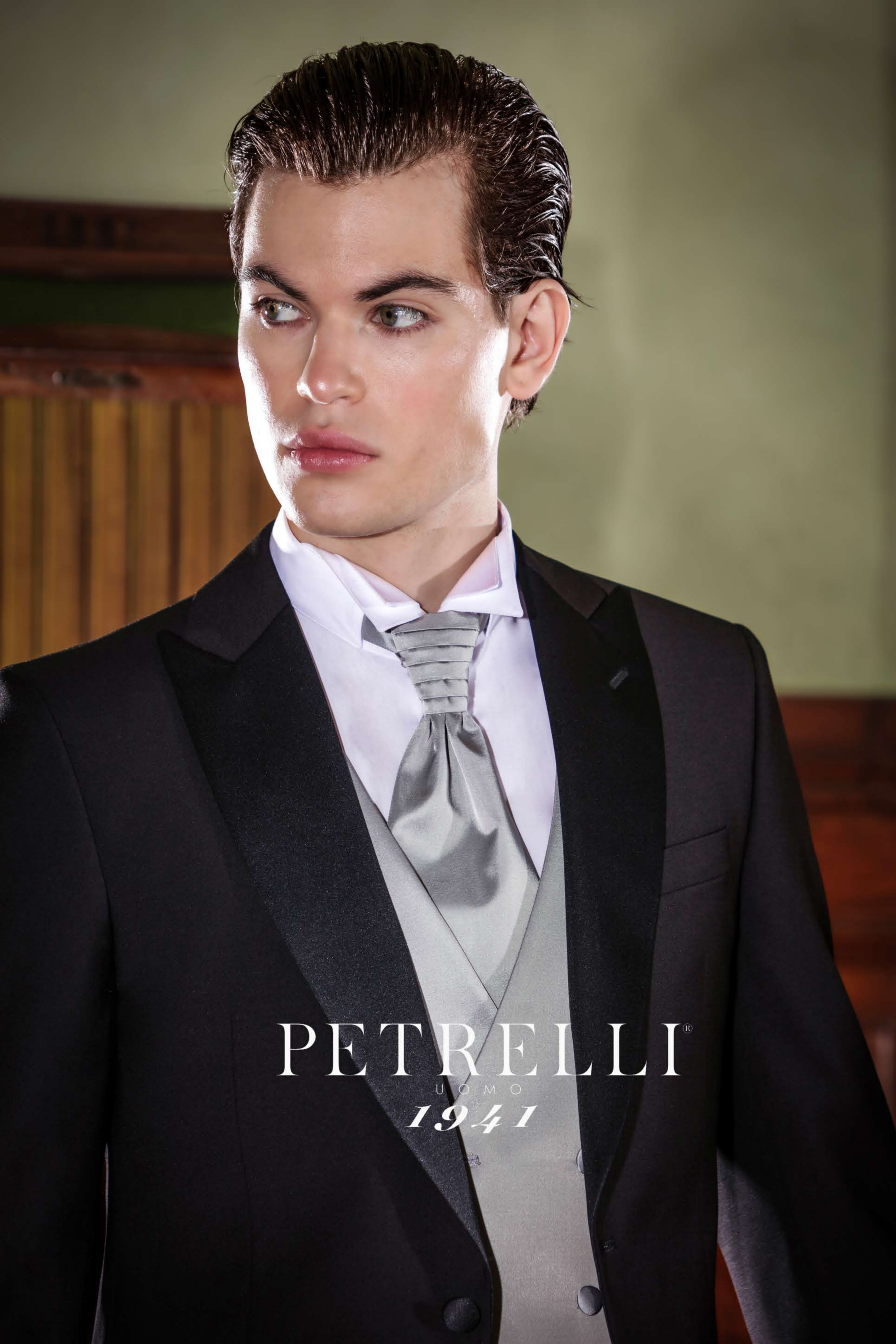
PETRELLI®
UOMO
1941



PETRELLI[®]
UOMO
1941



PETRELLI®
U O M O
1941



PETRELLI®
U O M O
1941